

 Class 3 1000hrs Salt Spray Tested

 Class 4 2000hrs Salt Spray Tested



## TAPPERMAN® FASTENERS

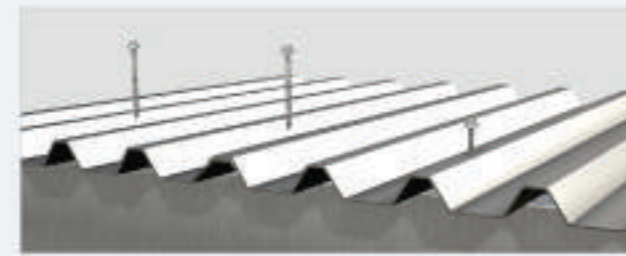


CREST FIX

### METAPP® PIERCED FIX



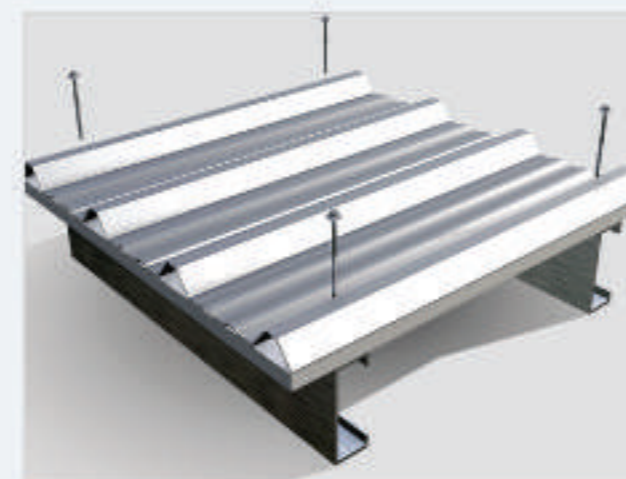
MT 12 - 14 x 50MM  
HWF, FT, LV, GREY EPDM 2.5MM



MT 12 - 14 x 65MM  
HWF, DS, LV, 12DT/14, GREY EPDM 2.5MM



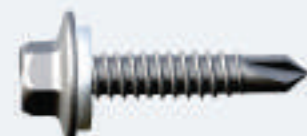
MT 12 - 14 x 90MM  
HWF, DS, LV, 12DT/14, GREY EPDM 2.5MM



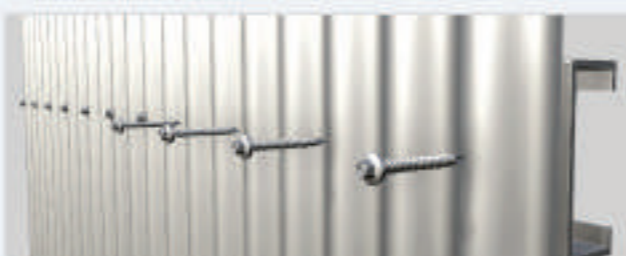
**Application:**  
Used to secure Crest/Pierced Fix metal roof sheeting profiles into steel substrate. Commonly used with IBR, Corrugated and Widespan profiles.

VALLEY FIX

### METAPP® CLADDING



MT 12 - 14 x 25MM  
HWF, FT, LV, GREY EPDM 2.5MM



**Application:**  
Used to install Side/Wall Cladding. Commonly used with IBR and Widespan metal or translucent roofing profiles.

STITCHING

### METAPP® FLASHINGS



MT 14 - 20 x 22MM  
HWF, FT, LVR, GREY EPDM 2.5MM



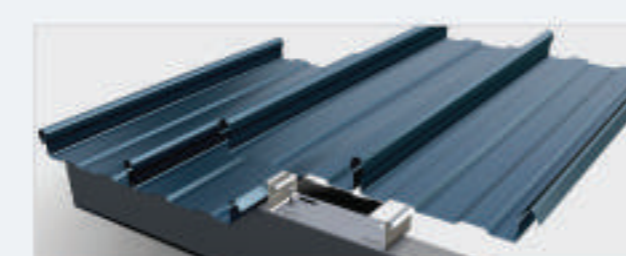
**Application:**  
Used to secure thin gauge sheets to one another. Commonly used to secure flashings to metal roofing sheeting and to stitch side laps.

CONCEALED FIX

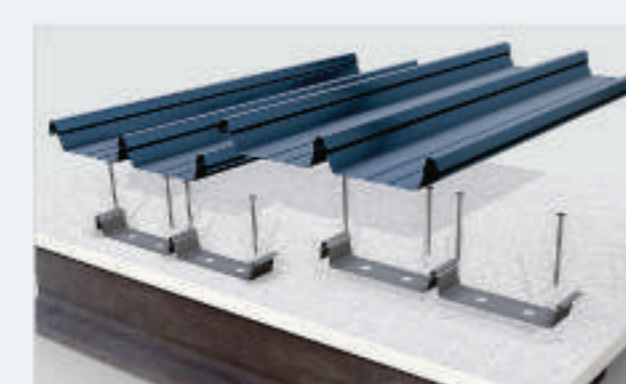
### METAPP® CONCEALED FIX



MT 10 - 24 x 22MM  
WFR + SQD2, FT, LV



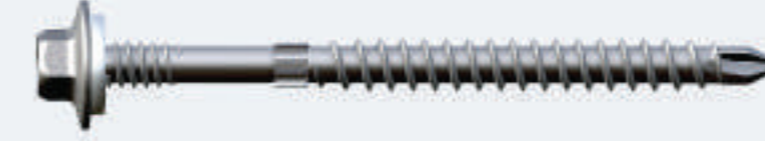
MT 12 - 14 x 65MM  
WFR + SQD2, FT, LV



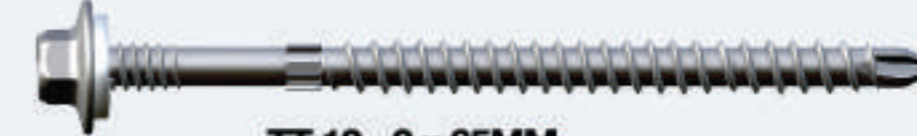
**Application:**  
Used to secure Concealed Fix clips into steel substrate. Commonly used with Concealed/Secret Fix profiles.

CREST FIX

### TIMTAPP® PIERCED FIX



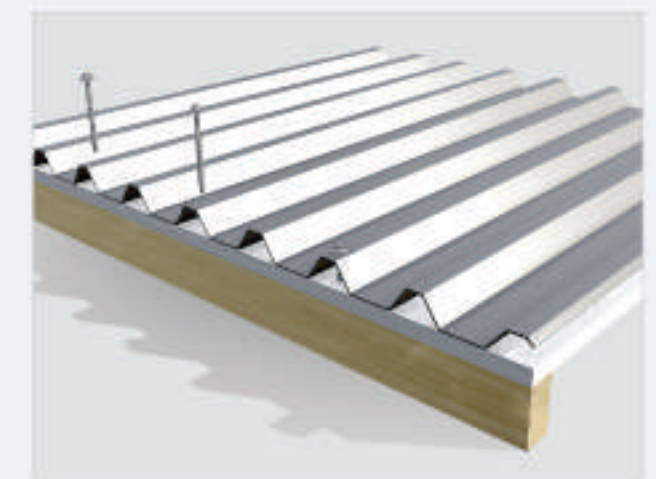
TT 12 - 9x 50MM  
HWF, DS, S17, 12DT/14, GREY EPDM 2.5MM



TT 12 - 9 x 65MM  
HWF, DS, S17, 12DT/14, GREY EPDM 2.5MM



TT 12 - 9 x 75MM  
HWF, DS, S17, 12DT/14, GREY EPDM 2.5MM



TT 12 - 9 x 90MM  
HWF, DS, S17, 12DT/14, GREY EPDM 2.5MM

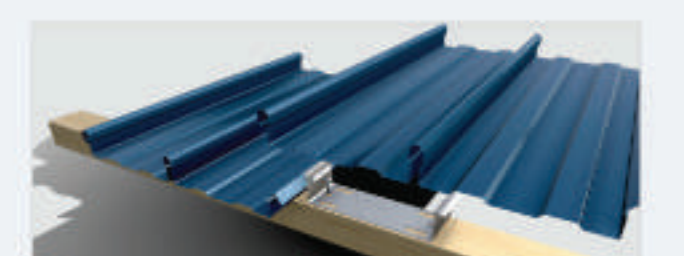
**Application:**  
Used to secure Crest/Pierced Fix metal roof sheeting profiles into timber substrate. Commonly used with IBR, Corrugated and Widespan profiles.

CONCEALED FIX

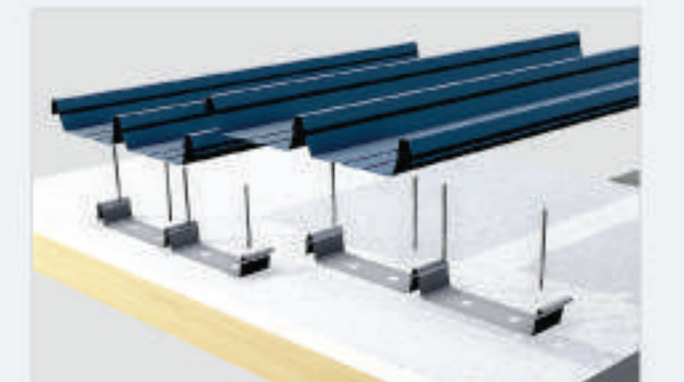
### TIMTAPP® CONCEALED FIX



TT 10 - 12 x 45MM  
WFR + SQD2, FT, S17



TT 12 - 9 x 65MM  
WFR + SQD2, FT, S17



**Application:**  
Used to secure Concealed Fix clips into timber substrate. Commonly used with Concealed/Secret Fix profiles.

PE CAPS, DRIVE BITS & BONDED WASHERS

### ACCESSORIES ACCESSORY APPLICATION



12 - 19MM Ø x 0.8MM  
ALU BONDED GREY EPDM WASHER



12 - 25MM Ø x 0.8MM  
ALU BONDED GREY EPDM WASHER

**Application:**  
Used as an extra waterproofing seal and used in high wind conditions. Commonly used with Crest/Pierced Fix screws.



8mm x 65mm  
MAGNETIC SOCKET / NUT SETTER

**Application:**  
Required to install Hex Washer Flange (HWF) screws.



#2 x 25MM,  
SQUARE DRIVE BIT

**Application:**  
Required to install Square Drive (SQD) wafer head screws.



8MM x 16MM  
PE COLOUR CAPS

**Application:**  
Best suited with Corroshield® and Tapperman® Fasteners. Applicable for IBR, Corrugated and Widespan profiles.